



CHATTERTON | REES



135B Battersea Rise, London, SW11 1HE
£740,000

A large three bedroom split level garden flat in the centre of Battersea. A great option if you are looking for space , potential to add value and a garden.

With close to 1050sqft over the first and second floors of a period building, you have an excellent eat in kitchen to the rear with glass extension that leads down on to the patio area with a great sized living room to the front. There is also the main bathroom and third bedroom on the same floor.

The top floor of the property has a huge master bedroom and en suite bathroom, a further bedroom and a flat roof to the rear that could easily STPP be a roof terrace or another bedroom.

Sold with a share of freehold and located only a mater of meters from Northcote Road and Clapham Junction it is an enviably located property.

Floor Plan

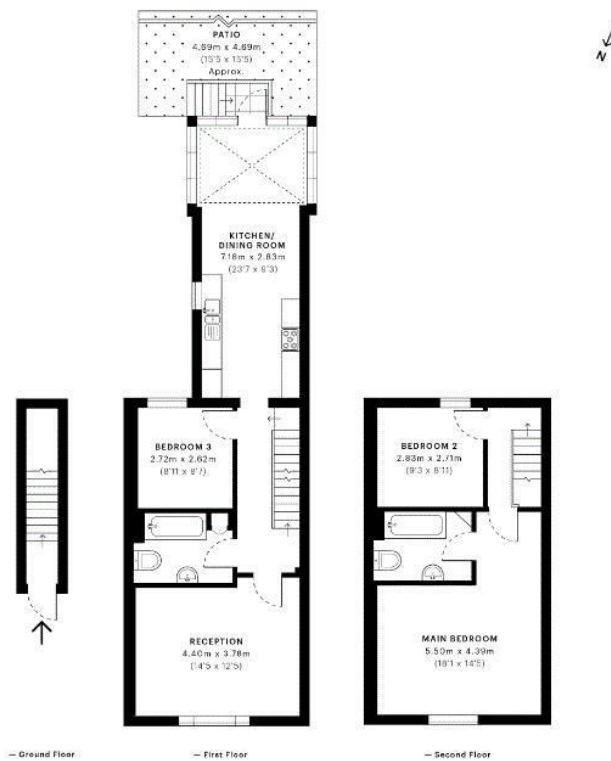


Battersea Rise, SW11

CAPTURE DATE: 17/09/2021 LASER SCAN POINTS: 9,924,065

GROSS INTERNAL AREA

97.98 sqm / 1054.65 sqft



Verified

Certified Planning Resource

GROSS INTERNAL AREA (GIA) The footprint of the property: 97.98 sqm / 1054.65 sqft.
 NET INTERNAL AREA (NIA) Excludes walls, structural features and circulation spaces: 89.25 sqm / 961.11 sqft.
 EXTERNAL OPERATIONAL FOOTPRINT Excludes balconies, verandas: 1.05 sqm / 11.30 sqft.
 OCCUPIED FLOOR HEIGHT Limited to a maximum of 1.1m: 0.00 sqm / 0.00 sqft.

Super low flow flow rates are provided in accordance with Royal Institution of Chartered Surveyors' Property Measurement Standards. Photos and graphics are illustrative only and excluded from all area calculations. Due to rounding, numbers may not add up precisely. All measurements shown for this build are taken lengths and widths are the maximum point of measurement captured in the scan.

NIA: 89.25 sqm / 961.11 sqft
 EOP: 1.05 sqm / 11.30 sqft
 OFH: 0.00 sqm / 0.00 sqft

Area Map



Energy Efficiency Graph

Energy Efficiency Rating		
	Current	Potential
Very energy efficient - lower running costs		
(92 plus) A		
(81-91) B		
(69-80) C		
(55-68) D		
(39-54) E		
(21-38) F		
(1-20) G		
Not energy efficient - higher running costs		
England & Wales EU Directive 2002/91/EC		
Environmental Impact (CO ₂) Rating		
	Current	Potential
Very environmentally friendly - lower CO ₂ emissions		
(92 plus) A		
(81-91) B		
(69-80) C		
(55-68) D		
(39-54) E		
(21-38) F		
(1-20) G		
Not environmentally friendly - higher CO ₂ emissions		
England & Wales EU Directive 2002/91/EC		

These particulars, whilst believed to be accurate are set out as a general outline only for guidance and do not constitute any part of an offer or contract. Intending purchasers should not rely on them as statements of representation of fact, but must satisfy themselves by inspection or otherwise as to their accuracy. No person in this firm's employment has the authority to make or give any representation or warranty in respect of the property.